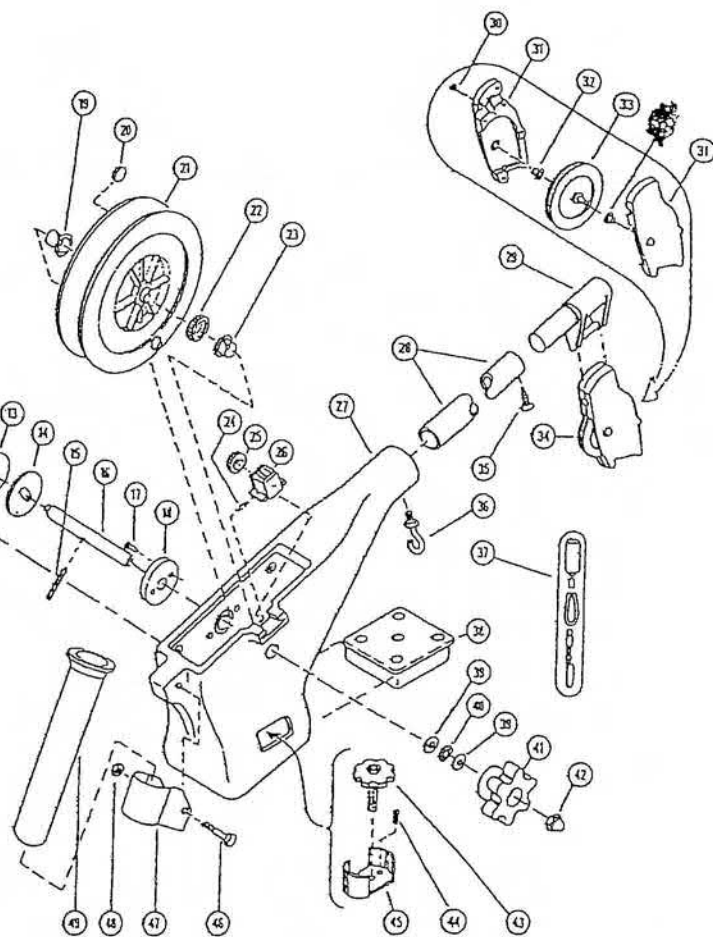


DIGI-TROLL

Key No.	Part Name	Part No.
1.	Screw — motor cover (seven needed)	C2127
2.	Cover — motor	C2057
3.	Nut — Motor bolt (three needed)	C2109
4.	Lock washer — motor bolt (three needed)	C2108
5.	Motor & reduction gear unit	C2086
6.	Screw — control unit (four needed)	C2020
7.	Easy-Touch control unit	C2579A
8.	Screw — motor housing (three needed)	C2114
9.	Housing — motor	C2647
10.	Bolt for mounting motor (three needed)	C2107
11.	Drive shaft assembly	C2384A
12.	Clutch plate for drive shaft	C2581
13.	Clutch pad	C2290
14.	Clutch plate for clutch shaft	C2273
15.	Set screw (half-dog 5/16-18 x 1")	C2285
16.	Clutch shaft	C2377
17.	Screw — motor housing guide (two needed)	C2020
18.	Guide — motor housing	C2373
19.	Bearing — clutch shaft (motor side)	C2639
20.	Magnet	C2577
21 & 22.	Cable reel assembly	C2300A
22.	Gear only — cable reel	C2026
23.	Bearing — clutch shaft (meter side)	C2024
24.	Tension pad — depth meter	C2255
25.	Gear only — depth meter	C2027
25 & 26.	Depth meter assembly	C2025A
27.	Body	C2007A
28.	Boom for 24-inch	C2769
	48-inch	C2770
	72-inch	C2771
28 & 29.	Boom & head assembly for 24-inch	C2887A
	48-inch	C2888A
	72-inch	C2889A
29.	Boom head	C2701
30.	Screw — swivel head (six needed)	C2020

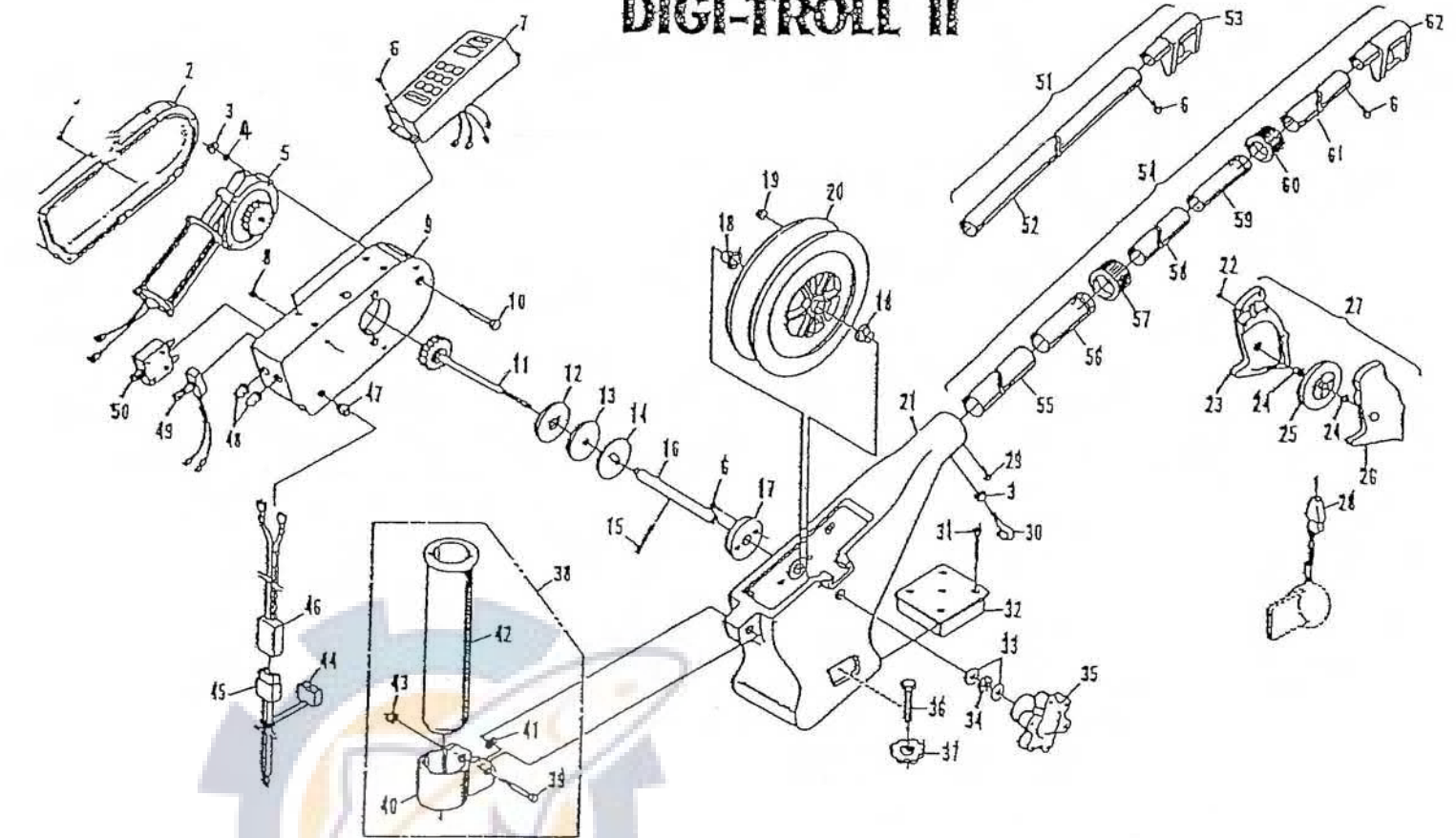


Key No.	Part Name	Part No.
31.	Side plates — swivel head (pair)	C2038R-L
32.	Bearing — pulley wheel (two needed)	C2042
33.	Pulley wheel — swivel head	C2353
34.	Swivel head assembly	C2043A
35.	Screw	C2382
36.	Ball-Hook™ and jam nut	C2525A
37.	Cushion swivel kit	C2191A
38.	Base — mounting	C2001
39.	Race — thrust bearing (two needed)	C2690
40.	Thrust bearing	C2689
41.	Knob — clutch	C2386A
42.	Nut — acom	C2019
43.	Wheel and stud — base locking	C2083A
44.	Screw — base locking guide (two needed)	C2020
45.	Guide — base locking	C2431
46.	Bolt — rod holder clamp (5/16-18 x 1 1/4")	C2034
47.	Clamp — rod holder	C2183
48.	Nut — rod holder clamp (5/16-18)	C2240
49.	Tube — rod holder	C2033
50.	Cable — battery end	C2101
51.	Cable — motor end	C2125
52.	Grommet — strain relief	C2126
53.	Boot — circuit breaker & switch	C2195
54.	Switch — on/off	C2616
55.	Circuit breaker	C2113

Made in U.S.A.
All Cannon downriggers are covered by U.S. Pat. D-269,992
Copyright 1986, S & K Products, Inc. All rights reserved.

CANNON / S & K Products, Inc.

DIGI-TROLL II



Key No. Part Name

Part No.

1.	Screw #8 x 7/8 Pan Hd. (7 needed)	9370100
2.	Cover — Motor Housing	1221483
3.	Nut 1/4-20 Hex (1 needed)	9130100
4.	Washer 1/4 Lock (3 needed)	9430070
5.	Motor & Reduction Gear Unit	1258000
6.	Screw #8 x 5/8 Pan Hd (7 needed)	9370070
7.	Control Box Assembly	1488791
8.	Screw 1/4 x 1 Hex Wash Hd (3 needed)	9370210
9.	Housing — Motor	1243600
10.	Bolt 1/4-20 x 2-3/4 Hex Hd. (3 needed)	9040280
11.	Shaft Assembly — Drive	1280001
12.	Plate — Drive	0657696
13.	Pad — Clutch	1254670
14.	Plate — Clutch	0457695
15.	Screw 5/16-18 x 1 Set (Half Dog)	9340130
16.	Shaft — Reel	1280002
17.	Guide — Motor Housing	1237583
18. *	Bearing — Nylon Keyed (2 needed)	9010001
19.	Magnet	1459666
20.	Reel Assembly — Cable	1474000
21.	Frame — Assembly — Main w/Hex (Contains: Frame, Lock Knob & Bolt, Ball Hook & Nut, and Boom Locking Screw)	5530001
	Screw #14 x 1/2 Pan Hd (2 needed)	9370010

Key No. Part Name

Part No.

23.	Plate — Side (Left)	0267002
24.	Bearing — Brass (2 needed)	9010070
25. *	Pulley — Cable	0269728
26.	Plate — Side (Right)	0267001
27.	Head Assembly — Swivel (Packaged)	2250135
	Head Assembly — Swivel (Unpackaged)	0200135
28.	Terminaler (Packaged)	2250141
29.	Screw 1/4-20 x 3/4 Pan Hd	9280750
30.	Hook — Ball (1/4-20 Thread)	9040040
31.	Screw 1/4-20 x 2 Truss Hd (Pkg. of 4)	2250150
32.	Base — Mounting	1007334
33. *	Plate — Bearing (2 needed)	9010310
34. *	Bearing — Thrust	9010280
35.	Knob — Assembly	0649002
36.	Bolt 3/8-18 x 1-1/2 Hex Hd.	9040340
37.	Knob — Lockdown	0849615

ROD HOLDER ASSEMBLY (OPTIONAL)

38.	Rod Holder Assembly (Pkg.)	2450161
39.	Bolt 5/16-18 x 1-3/4 Hex Hd	9040101
40.	Clamp — Rod Holder (w/Hex)	3319002
41.	Washer 5/16 Int./Ext. Lock	9400160
42.	Tube — Rod Holder	0290796
43.	Nut 5/16-18 Hex	9130190

Key No. Part Name

Part No.

44.	Cap — Power Cable	1418070
45.	Cable Assembly — Battery	4415002
46.	Cable Assembly — Motor	4415001
47.	Grommet — Strain Relief	1235575
48.	Box — Switch & Circuit Breaker (2 needed)	1221491
49.	Switch Assembly	1400920
50.	Circuit Breaker	1212388

BOOM ASSEMBLY 2 FOOT (OPTIONAL)

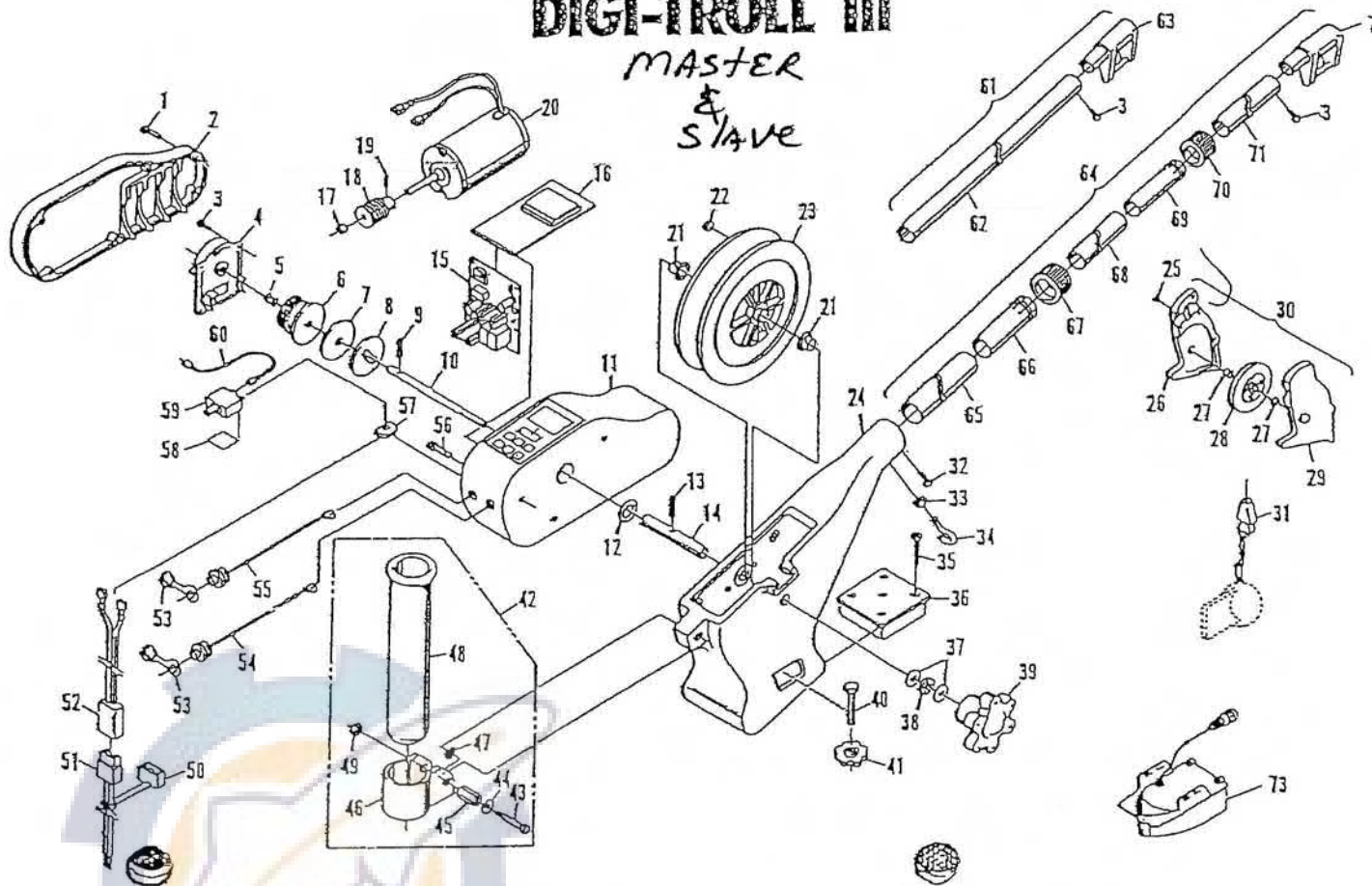
51.	Boom Assembly 2 Foot (Pkg.)	2250364
52.	Boom 2 Foot	2280817
53.	End — Boom	2216403

BOOM ASSEMBLY TELESCOPIC (OPTIONAL)

54.	Boom Assembly Telescopic (Pkg.)	2210620
55.	Tube — Boom Base	2290828
56.	Collet — Base Tube	2222820
57.	Clamp — Base Tube	2219620
58.	Tube — Boom Intermediate	2290829
59.	Collet — Intermediate Tube	2222821
60.	Clamp — Intermediate Tube	2219821
61.	Tube — Boom End	2290830
62.	End — Boom	2227820
63.	Cable — Replacement 200 Ft.	2215398

DIGI-TROLL III

MASTER & SLAVE



Key No.	Part Name	Part No.
1.	Screw #8-178 Pan Hd. (6 needed)	9370002
2.	Cover — Motor Housing	1421070
3.	Screw #8 x 5/8 Pan Hd. (5 needed)	9370070
4.	Cover — Gear Case	1421071
5.	Bearing — Drive Shaft	9010003
6.	Gear & Driver — Worm	1433073
7.	Pad — Clutch	1264670
8.	Plate — Clutch	0457695
9.	Pin 3/16 x 1 Rod	9250002
10.	Shaft — Drive	1480070
11.	Housing Assembly — Motor	1443071
12.	Seal "O" Ring	1479070
13.	Screw 5/16-18 x 1 Set (Half Dog)	9340130
14.	Shaft — Rod	1480071
15.	Board — P.C. Power	5513002
16.	Board — P.C. Display (Slave) Board — P.C. Display (Master)	1413071 5513001
17.	Bearing — Motor Shaft	9010002
18.	Worm	1497070
19.	Pin 3/32 x 3/4 Rod	9250001
20.	Motor 12 Volt D.C.	1458001
21.*	Bearing — Nylon Keyed (2 needed)	9010001
22.	Magnet (2 needed)	1459665
23.	Reel Assembly w/Magnets	1474070
24.	Frame Assembly w/Helix (Contains: Frame, Lock Knob & Bolt, Ball Hook & Nut, and Boom Locking Screw)	5530002
25.	Screw #4 x 1/2 Pan Hd (2 needed)	9370010
26.	Plate — Side (Left)	0267002

Key No.	Part Name	Part
27.	Bearing — Brass (2 needed)	9010001
28.*	Pulley — Cable	0269726
29.	Plate — Side (Right)	0267001
30.	Head Assembly — Swivel (Packaged) Head Assembly — Swivel (Unpackaged)	2250135 0200135
31.	Terminator (Pkg.)	2250141
32.	Screw 1/4-20 x 3/4 Pan Hd.	9280750
33.	Nut 1/4-20 Hex	9130100
34.	Hook — Ball (1/4-20 thread)	9040040
35.	Screw 1/4-20 x 2 Truss Hd (Pkg. 4)	2250150
36.	Base Mounting	1007334
37.*	Flange — Bearing (2 needed)	9010310
38.*	Bearing — Thrust	9010280
39.	Knob — Assembly	0649002
40.	Bolt 3/8-16 x 1-1/2 Hex Hd	9040340
41.	Knob — Lockdown	0649615

Key No.	Part Name	Part
52.	Cable Assembly — Motor	
53.	Cap — Connector (2 needed)	
54.	Cable Ass'y — Series Hook Up (Slave 2 needed) Cable Ass'y — Series Hook Up (Master 1 needed)	
55.	Cable Ass'y — Transducer (Master Only)	
56.	Screw 1/4 x 3/4 Hex Wash. Hd. (3 needed)	
57.	Grommet — Power Cord	
58.	Tape — Double Faced	
59.	Circuit Breaker	
60.	Wire — Jumper	

BOOM ASSEMBLY 2 FT. (OPTIONAL)

61.	Boom Assembly 2 Ft. (Pkg.)	22
62.	Boom 2 Ft.	22
63.	End — Boom	22

BOOM ASSEMBLY TELESCOPIC (OPTIONAL)

64.	Boom Assembly Telescopic (Pkg.)	22
65.	Tube — Boom Base	22
66.	Coilset — Base Tube	22
67.	Clamp — Base Tube	22
68.	Tube — Boom Intermediate	22
69.	Coilset — Intermediate Tube	22
70.	Clamp — Intermediate Tube	22
71.	Tube — Boom End	22
72.	End — Boom	22
73.	Transducer Assembly w/Hardware (Master Only)	14
74.	Cable — Replacement 400 Ft. Camo	22

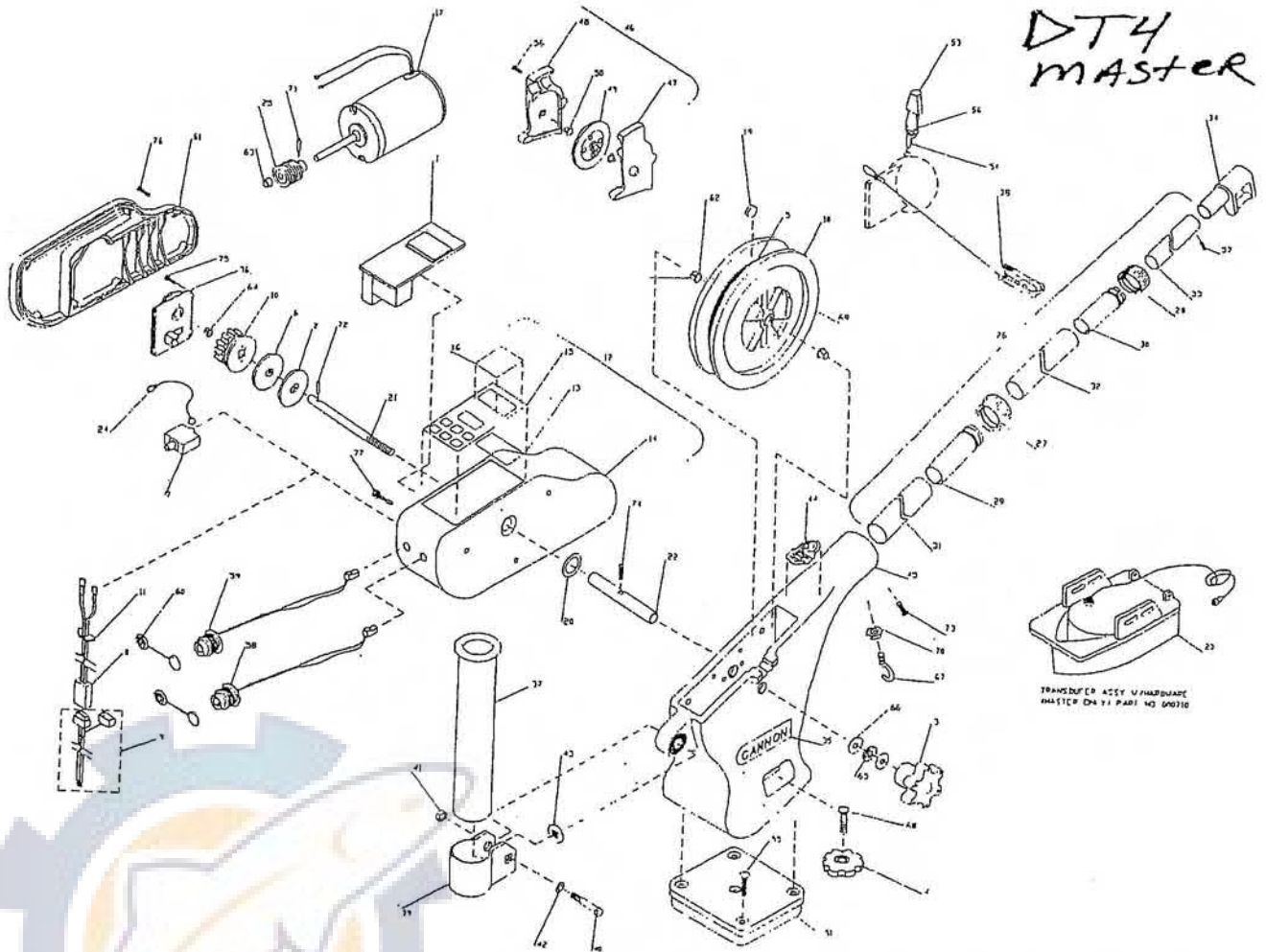
ROD HOLDER ASSEMBLY (OPTIONAL)

42.	Rod Holder Assembly (Hex) Pkg.	2450006
43.	Bolt 5/16-18 x 1-3/4 Hex Hd.	9040310
44.	Washer 5/16 Flat	9430101
45.	Stop — Rod Holder Locking (Hex)	3387001
46.	Clamp — Rod Holder w/Helix	3319002
47.	Washer 5/16 Int./Ext. Tooth	9430160
48.	Tube — Rod Holder	0290796
49.	Nut 5/16-18 Hex	9130190
50.	Cap — Power Cable	1415070
51.	Cable Assembly — Battery	1415072

SWITCH PAD

1464070

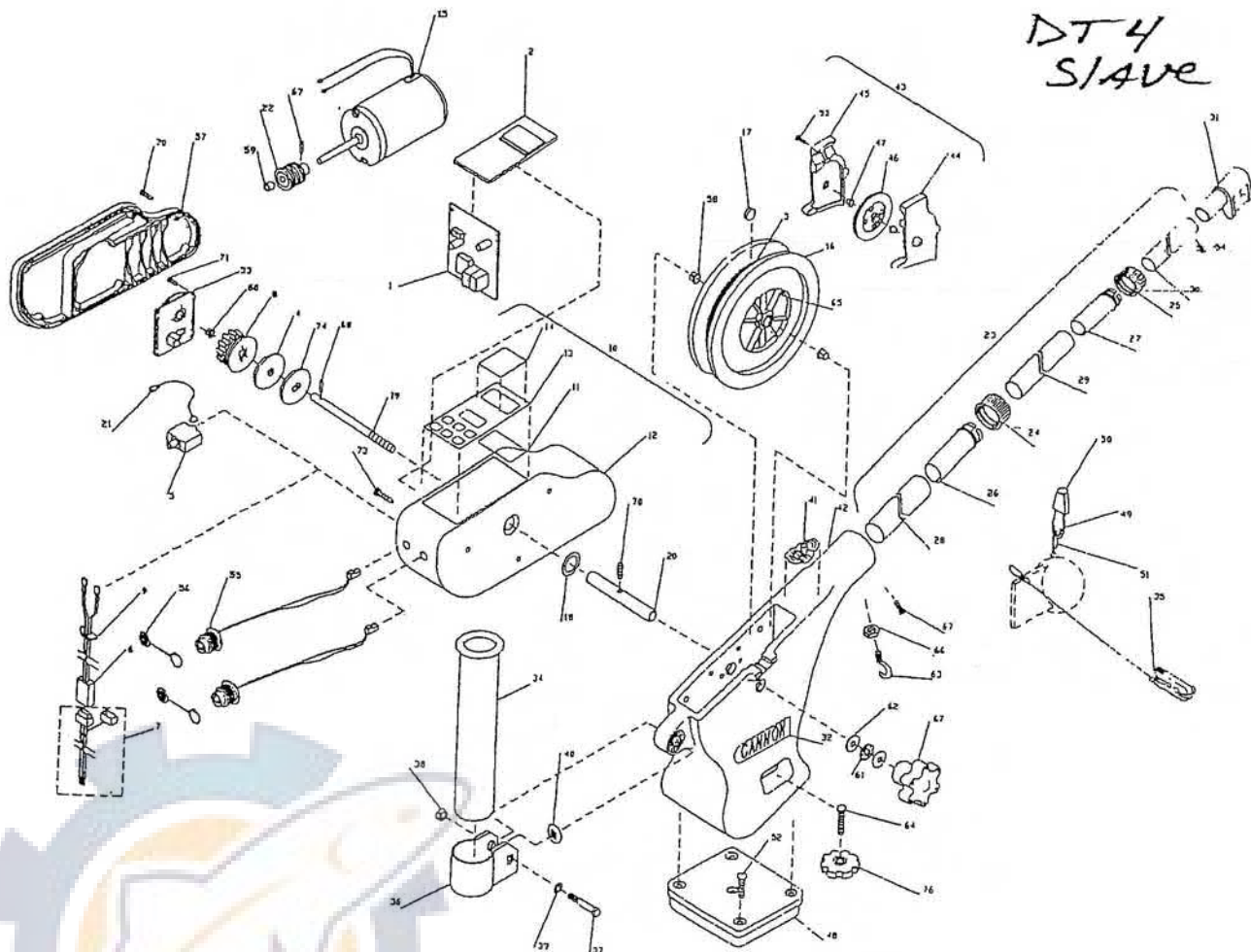
DT4
master



ITEM	PART NO.	DESCRIPTION	QTY
1	000718	ASY PCB SINGLE BOARD MASTER	1
2	0467695	HDW REEL PLATE CLUTCH/BRAKE	1
3	0649002	ASY KNOB BRAKE ADJUST	1
4	0849615	HDW KNOB HAND BASE LOCK	1
5	1015391	WIR CABLE 316 SS .034 DIA 1X7	400
6	1264670	ASY CLUTCH PAD SM HOLE	1
7	1412070	BREAKER CIRCUIT (18 AMP)	1
8	1415070	ASY CBL MOTOR	1
9	1415072	ASY CBL BATTERY	1
10	1433074	ASY GEAR & DRIVER WORM	1
11	1435070	HDW GROMMET POWER CORD	1
12	1443074	ASY HOUSING MOTOR DTIV	1
13	1497071	LEN WINDOW DISPLAY	1
14	5543004	HSG MOTOR W/HOLES	1
15	5564070	SWF CANNON DT IV KEY PAD	1
16	804099	PKG LENS POLYMASK TBL110	5
17	1458001	MOTOR 12V DC	1
18	1474070	ASY REEL W/MAGNETS	1
19	1459666	MAGNET REEL (POLARITY)	2
20	1479070	HDW O-RING CANNON	1
21	1480070	SHAFT DRIVE	1
22	1480071	SHAFT REEL	1
23	000710	DCR TRANS & HTG HDWR DOWNRIGGR	1
24	1496070	ASY WIRE JUMPER	1
25	1497070	WORM	1
26	2210821	ASY BOOM TELESCOPIC	1
27	2219822	HDW CLAMP BASE TUBE NEW	1
28	2219823	HDW CLAMP INTER TUBE NEW	1
29	2222822	HDW COLLET BASE TUBE NEW	1
30	2222823	HDW COLLET INTER TUBE NEW	1
31	2290828	ASY TUBE BOOM BASE BLACK	1
32	2290829	ASY TUBE BOOM INTERMEDIATE BLK	1
33	2290830	ASY TUBE BOOM END BLACK	1
34	2227820	END BOOM	1
35	3327003	DEC EMBLEM 1 X 4 LARGE	2
36	4421002	HSG GEAR CASE COVER W/HOLES	1
37	0290796	TUBE ROD HOLDER	1
38	2277007	ASY REL-CASE-PINCH-R	1
39	3319003	ASY CLAMP-ROD HOLDER W/HEX	1

ITEM	PART NO.	DESCRIPTION	QTY
40	9040310	HDW BOLT 5/16-18 X 2 HEX HEAD	1
41	9130190	HDW NUT 5/16-18 HEX	1
42	9430101	HDW WAS 5/16 FLAT	1
43	3325001	HDW DISK ROD HOLDER LOCKING	1
44	5527004	DEC EMBLEM NOSE DT4	1
45	5530030	HSG FRAME LARGE BLACK W/HEX	1
46	0200135	ASY SWIVEL HEAD	1
47	0267001	PLATE SIDE (RIGHT)	1
48	0267002	PLATE SIDE (LEFT) W/O COUNTER	1
49	0269726	PULLEY WHEEL SWIVEL HD	1
50	9010070	HDW BEARING BRASS	2
51	1007334	HSG BASE STD MOUNTING LEXAM	1
52	9100100	CON TERMINATOR	1
53	9100101	CUSHION SLEEVE TERMINATOR	1
54	9100620	HDW SNAP SWIVEL MARLIN	1
55	9280720	HDW SCR 1/4 20X2 TRUSS HD PHIL	4
56	9370010	HDW SCR #4X1/2 PAN HD PHIL	3
57	9370070	HDW SCR #8X5/8 PAN HD PHIL	1
58	609112	ASY CBL SERIAL DT4 COMM	1
59	609113	ASY CBL XDCR DT4 INTERCONNECT	1
60	700176	CON CAPX MINI-CON PANEL MOUNT	2
61	802161	HSG MOTOR COVER MOD	1
62	9010001	HDW BEARING NYLINER KEYED	2
63	9010002	HDW BEARING	1
64	9010003	HDW BEARING DRIVE SHAFT NYLINE	1
65	9010280	HDW BEARING TORQUE TRANS	1
66	9010310	HDW BEARING FACE TORQUE	2
67	9040040	HDW BOLT 1/4-20 ROLLED THD HOOK	1
68	9040340	HDW BOLT 3/8-16 X 1 1/2 HEX HD	1
69	9100070	CON LEADER SLEEVE	1
70	9130100	HDW NUT 1/4-20 HEX	1
71	9250001	HDW PIN 3/32 X 3/4 ROLL SS	1
72	9250002	HDW PIN 3/16 X 1 ROLL SS	1
73	9280750	HDW SCR 1/4 20X3/4 RH PHIL	1
74	9340130	HDW SCR SET 5/16-18X1 IN 1/2DG	1
75	9370070	HDW SCR #8X5/8 PAN HD PHIL	4
76	9370100	HDW SCR #8X7/8 PAN HD PHIL	6
77	9370205	HDW SCR 1/4 X 3/4 HEX WASH HD	3

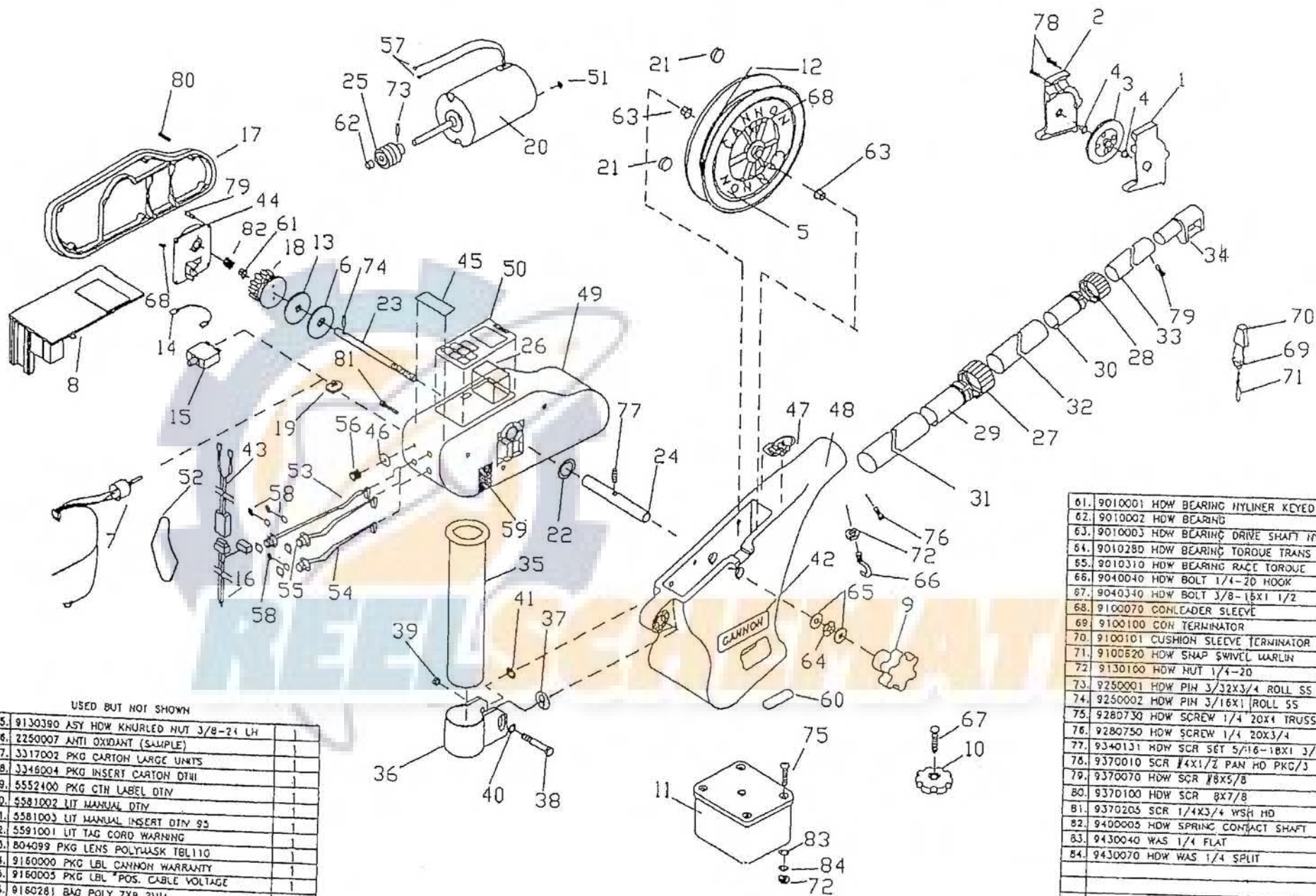
DT4
SLAVE



ITEM	PART NO	DESCRIPTION	QTY
1	000702	ASY PCB CAN POWER	1
2	000720	ASY PCB CAN DTIV SLAVE	1
3	1015391	WIR CABLE 316 SS .034 DIA 1X7	400
4	1264670	ASY CLUTCH PAD SM HOLE	1
5	1412070	BREAKER CIRCUIT (18 AMP)	1
6	1415070	ASY CBL MOTOR	1
7	1415072	ASY CBL BATTERY	1
8	1433074	ASY GEAR & DRIVER WORM	1
9	1435070	HDW GROMMET POWER CORD	1
10	1443074	ASY HOUSING MOTOR DTIV	1
11	1497071	LEN WINDOW DISPLAY	1
12	5543004	HSG MOTOR W/HOLES	1
13	5564070	SWI CANNON DT IV KEY PAD	1
14	804099	PKG CENS POLYMASK TBL110	5
15	1458001	MOTOR 12V DC	1
16	1474070	ASY REEL W/MAGNETS	1
17	1459666	MAGNET REEL (POLARITY)	2
18	1479070	HDW O-RING CANNON	1
19	1480070	SHAFT DRIVE	1
20	1480071	SHAFT REEL	1
21	1496070	ASY WIRE JUMPER	1
22	1497070	WORM	1
23	2210821	ASY BOOM TELESCOPIC	1
24	2219822	HDW CLAMP BASE TUBE NEW	1
25	2219823	HDW CLAMP INTER TUBE NEW	1
26	2222822	HDW COLLET BASE TUBE NEW	1
27	2222823	HDW COLLET INTER TUBE NEW	1
28	2290828	ASY TUBE BOOM BASE BLACK	1
29	2290829	ASY TUBE BOOM INTERMEDIATE BLK	1
30	2290830	ASY TUBE BOOM END BLACK	1
31	2227820	END BOOM	1
32	3327003	DEC EMBLEM 1 X 4 LARGE	2
33	4421002	HSG GEAR CASE COVER W/HOLE	1
34	0290796	TUBE ROD HOLDER	1
35	2277007	ASY REL-CASE-PINCH-R	1
36	3319003	ASY CLAMP-ROD HOLDER W/HEX	1
37	9040310	HDW BOLT 5/16-18 X 2 HEX HEAD	1
38	9130190	HDW NUT 1/4-20 HEX	1

ITEM	PART NO	DESCRIPTION	QTY
39	9430101	HDW WAS 5/16 FLAT	1
40	3325001	HDW DISK ROD HOLDER LOCKING	1
41	5527004	DEC EMBLEM NOSE DT4	1
42	5530030	HSG FRAME LARGE BLACK W/HEX	1
43	0200135	ASY SWIVEL HEAD	1
44	0267001	PLATE SIDE (RIGHT)	1
45	0267002	PLATE SIDE (LEFT) W/O COUNTER	1
46	0269726	PULLEY WHEEL SWIVEL HD	1
47	9010070	HDW BEARING BRASS	2
48	1007334	HSG BASE STD MOUNTING LEXAN	1
49	9100100	CON TERMINATOR	1
50	9100101	CUSHION SLEEVE TERMINATOR	1
51	9100620	HDW SNAP SWIVEL MARLIN	1
52	9280720	HDW SCR 1/4 20X2 TRUSS HD PHIL	4
53	9370010	HDW SCR #4X1/2 PAN HD PHIL	3
54	9370070	HDW SCR #8X5/8 PAN HD PHIL	1
55	609112	ASY CBL SERIAL DT4 COMM	2
56	700176	CON CAPX MINI-CON PANEL MOUNT	2
57	802161	HSG MOTOR COVER MOD	1
58	9010001	HDW BEARING NYLINER KEYED	2
59	9010002	HDW BEARING	1
60	9010003	HDW BEARING DRIVE SHAFT NYLINE	1
61	9010280	HDW BEARING TORQUE TRANS	1
62	9010310	HDW BEARING RACE TORQUE	2
63	9040040	HDW BOLT 1/4-20 ROLLED HD HOOK	1
64	9040340	HDW BOLT 3/8-16 X 1 1/2 HEX HD	1
65	9100070	CON LEADER SLEEVE	1
66	9130100	HDW NUT 1/4-20 HEX	1
67	9250001	HDW PIN 3/32 X 3/4 ROLL SS	1
68	9250002	HDW PIN 3/16 X 1 ROLL SS	1
69	9280750	HDW SCR 1/4 20X3/4 RH PHIL	1
70	9340130	HDW SCR SET 5/16-18X1 IN 1/2DG	1
71	9370070	HDW SCR #8X5/8 PAN HD PHIL	4
72	9370100	HDW SCR #8X7/8 PAN HD PHIL	6
73	9370205	HDW SCR 1/4 X 3/4 HEX VASH HD	3
74	0467695	HDW REEL PLATE CLUTCH/BRAKE	1
75	0649002	ASY KNOB BRAKE ADJUST	1

DT 4 m/s 95-97

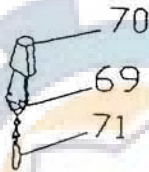
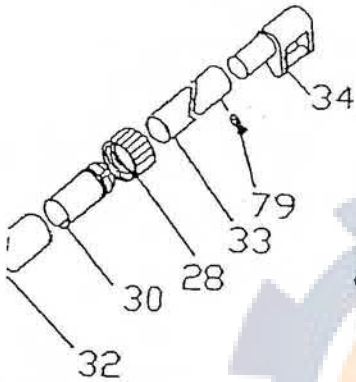
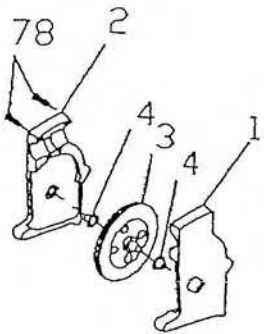


USED BUT NOT SHOWN

85.	9130390	ASY HOW KHURLED NUT 3/8-24 LH	1
86.	2250007	ANTI OXIDANT (SAMPLE)	1
87.	3317002	PKG CARTON LARGE UNITS	1
88.	3346004	PKG INSERT CARTON DT41	1
89.	5552400	PKG CTH LABEL DTIV	1
90.	5581002	LIT MANUAL DTIV	1
91.	5581003	LIT MANUAL INSERT DTIV 93	1
92.	5591001	LIT TAG CORD WARNING	1
93.	8040999	PKG LENS POLYMASK TBL110	1
94.	9160000	PKG LBL CANNON WARRANTY	1
95.	9160005	PKG LBL "POS. CABLE VOLTAGE"	1
96.	9160281	BAG POLY 7X9 2MM	1
97.	9370003	ASY SCR PKG OF THREE (SCREWS SHOWN)	1
98.	5552458	BAR CODE PROD DESC DTIV 96	1
99.	2276738	HOW RUBBERBAND 1 3/4"x1/16"	1
98.	804585	LIT CERT OF COMPLIANCE	1
99.	9800095	LIT HOW TO BOOKLET	1
100.	9800098	LIT SERVICE CENTERS CANNON 92	1

61.	9010001	HOW BEARING HYLINE KEYED	2
62.	9010002	HOW BEARING	1
63.	9010003	HOW BEARING DRIVE SHAFT HYLINE	1
64.	9010280	HOW BEARING TORQUE TRANS	1
65.	9010310	HOW BEARING RACE TORQUE	1
66.	9040040	HOW BOLT 1/4-20 HOOK	2
67.	9040340	HOW BOLT 3/8-18X1 1/2	1
68.	9100070	CONLEADER SLEEVE	1
69.	9100100	CON TERMINATOR	1
70.	9100101	CUSHION SLEEVE TERMINATOR	1
71.	9100620	HOW SNAP SWIVEL MARLIN	1
72.	9130100	HOW NUT 1/4-20	5
73.	9250001	HOW PIN 3/32X3/4 ROLL SS	1
74.	9250002	HOW PIN 3/16X1 ROLL SS	1
75.	9280730	HOW SCREW 1/4 20X1 TRUSS HD	4
76.	9280750	HOW SCREW 1/4 20X3/4	1
77.	9340131	HOW SCR SET 5/16-18X1 3/4 HD	1
78.	9370010	SCR #4X1/2 PAN HD PKG/3	1
79.	9370070	HOW SCR #8X5/8	5
80.	9370100	HOW SCR 8X7/8	6
81.	9370205	SCR 1/4X3/4 WSH HD	3
82.	9400005	HOW SPRING CONTACT SHAFT	1
83.	9430040	WAS 1/4 FLAT	4
84.	9430070	HOW WAS 1/4 SPLIT	4

DT 4 M/S 75-97



EXP	0200135	ASY SWIVEL HEAD	1
1	0267001	-PLATE SIDE RIGHT	1
2	0267002	-PLATE SIDE LEFT	1
3	0269726	-HOW PULLY WHEEL SWIVEL HD	1
4	9010070	-HOW BEARING BRASS	2
5	0274731	ASY REEL MACH CANNON	1
6	0467693	HOW REEL PLATE CLUTCH/BREAK	1
7	050215	ASY POT DTV 97	1
8	050217	ASY PCB DTV 97	1
9	0649001	HOW KNOB BREAK ADJUST	1
10	0849615	HOW KNOB HAND BASE LOCK	1
11	1007334	HSG BASE STD MOUNTING LEXAN	1
12	1015391	WR 316 .034 CANNON SS	400
13	1264670	ASY CLUTCH PAD SM HOLE	1
14	1296831	WR 14GA SWITCHBREAKER JUMPER	1
15	1412070	BREAKER CIRCUIT 18A	1
16	1415072	CABLE BATTERY 14AWG	1
17	1421072	ASY COVER DTV 97 MOTOR	1
18	1433074	ASY GEAR & DRIVER WORM	1
19	1435070	HOW GROMMET POWER CORD	1
20	1458001	MOTOR 12V DC	1
21	1459666	MAGNET REEL	2
22	1479070	HOW O-RING CANNON	1
23	1480070	SHAFT DRIVE	1
24	1480071	SHAFT REEL	1
25	1497070	WORM	1
26	1497071	LEN WINDOW DISPLAY	1
EXP	2210821	ASY BOOM TELESCOPIC	1
27	2219822	-HOW CLAMP BASE TUBE NEW	2
28	2219823	-HOW CLAMP INTER TUBE NEW	1
29	2222824	-OBS HOW COLLET BASE TUBE (93)	1
30	2222825	-HOW COLLET INTER TUBE 93	1
31	2290828	-ASY TUBE BOOM BASE BLACK	1
32	2290829	-ASY TUBE BOOM INTER. BLK	1
33	2290830	-ASY TUBE BOOM END BLACK	1
34	2227820	TELESCOPIC BOOM END	1
EXP	2477001	ASY ROD HOLDER ACC PKG OBROND	1
35	0290795	-TUBE ROD HOLDER	1
36	3319005	-ASY HOW CLAMP ROD HOLDER OBROND	1
37	3325002	-HOW DISC ROD HOLDER OBROND	1
38	9040310	-HOW BOLT 5/16-18X2 HEX HEAD	1
39	9130190	-HOW NUT 5/16-18 HEX	1
40	9430101	-HOW WAS 5/16 FLAT	1
41	9430160	-HOW WAS 5/16 INT/EXT LOCK	1
42	3327003	DEC EMBLEM 1X4 LARGE	2
43	4415004	CABLE POWER MOTOR STRAIGHT	1
44	4421002	HSG GEAR CASE COVER W/HOLE	1
45	4427006	DEC EMBLEM POSITIVE ION CONTROL	1
46	4427007	DEC PKC CONTROL KNOB M20/DTV	1
47	5527004	DEC NOSE EMBLEM DTV	1
48	5530030	HSG FRAME LGE BLK W/15DEG TEE	1
49	5543005	HSG MOTOR POST MOD DTV 95	1
50	5564070	SM CANNON DTV KEYPAD	1
51	602012	HOW NUT 10-32 HEX BZ	1
52	608018	HOW RUBBERBAND 3 1/2" #19	1
53	609145	ASY DTV XDCR INTERCONNECT 97	1
54	609147	ASY CBL SERIAL DTV M/S COMM 97	1
55	609148	ASY CBL SERIAL DTV COMM 97	1
56	611005	HOW KNB ROUND W/LINE .50IA AB	1
57	700032	CON TREM INSUL FOAMLE 12-10	2
58	700176	CON CAPX MINI-CON PANEL MOUNT	3
59	803103	HOW 3M VENT FABRIC	1
60	804002	DEC SERIAL LABEL .5X1.5 SILVER	1

61.	9010001	HOW BEARING NYLONER KEYED	2
62.	9010002	HOW BEARING	1
63.	9010003	HOW BEARING DRIVE SHAFT NYLON	1
64.	9010280	HOW BEARING TORQUE TRANS	1
65.	9010310	HOW BEARING RACE TORQUE	2
66.	9040040	HOW BOLT 1/4-20 HOOK	1
67.	9040340	HOW BOLT 3/8-16X1 1/2	1
68.	9100070	CONLEADER SLEEVE	1
69.	9100100	CON TERMINATOR	1
70.	9100101	CUSHION SLEEVE TERMINATOR	1
71.	9100620	HOW SNAP SWIVEL MARLIN	1
72.	9130100	HOW NUT 1/4-20	5
73.	9250001	HOW PIN 3/32X3/4 ROLL SS	1
74.	9250002	HOW PIN 3/16X1 ROLL SS	1
75.	9280730	HOW SCREW 1/4 20X4 TRUSS HD	4
76.	9280750	HOW SCREW 1/4 20X3/4	1
77.	9340131	HOW SCR SET 5/16-18X1 3/4 HD	1
78.	9370010	SCR #4X1/2 PAN HD PKG/3	1
79.	9370070	HOW SCR #8X5/8	5
80.	9370100	HOW SCR #8X7/8	6
81.	9370205	SCR 1/4X3/4 WSH HD	3
82.	9400005	HOW SPRING CONTACT SHAFT	1
83.	9430040	WAS 1/4 FLAT	4
84.	9430070	HOW WAS 1/4 SPLIT	4